

GEBERIT

HyTronic Taps

Designed for a purpose



Designed for durability

1.75 million operations and still counting


HyTronic taps represent a new generation of sensor-operated washbasin-mounted taps and wall-mounted installations.

Extensive, ongoing testing proves the reliability of HyTronic taps. An impressive 1.75 million faultless operations demonstrates their robustness. A lithium battery with a three-year life assures approximately 200,000 operations, equipping these taps for a long future, even with intensive use.

- Efficient twin beam system enables a fast response time and minimises accidental operation.
- In extremely high interference, commercial environments, the tap can compensate by changing from dual to single beam, maintaining dependable operation.
- Electronic software automatically switches between two modes: Static mode (default) senses the complete infrared beam viewing angle; Dynamic mode only senses hand motion for use in high interference environments.
- A unique combination of infrared sensor and protection window merged into one single unit ensures reliable operation. This unit is integrated into the surface of the tap housing. Its design facilitates full resistance to internal water condensation and dust deposits.

1,750,000





Designed for water resistance

Perfect functionality – even under water

HyTronic taps activate the water flow each and every time the sensor detects an object. The sensor module is completely sealed to prevent moisture damage. It has even been submerged under water for extended periods during testing and successfully proved that in this case, water and electronics are compatible.

- The infrared sensor is a closed unit and shielded from disturbing external light sources such as halogen lamps and fluorescent tubes.
- Electronic components are sealed inside an airtight module to prevent moisture damage.
- This module is integrated into the tap housing of the washbasin-mounted taps or concealed in the wall-mounted systems to reduce the risk of water damage and vandalism.

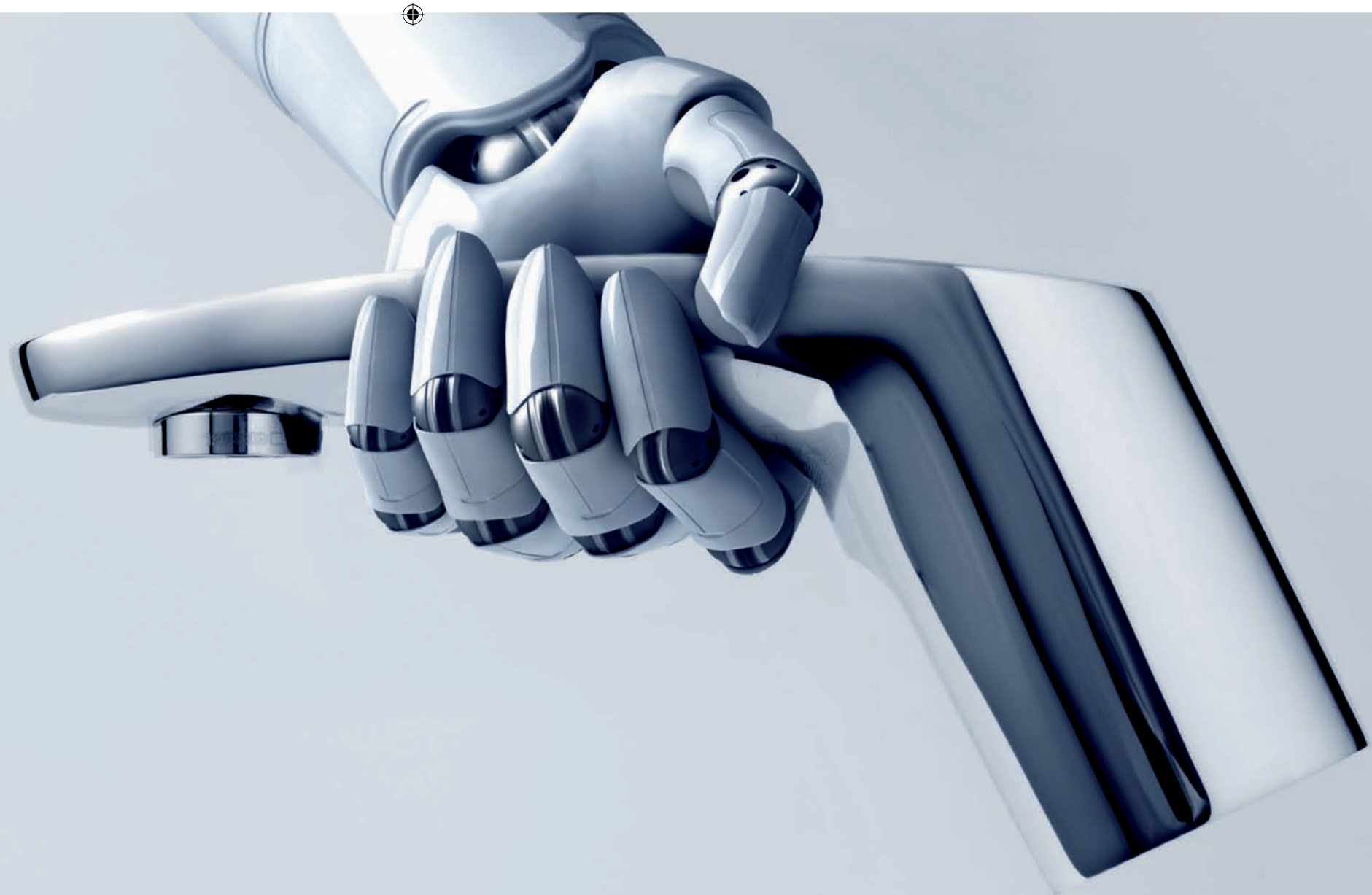


Designed for simplicity

Less complexity – less error potential

The HyTronic taps incorporate a unique combination of sophisticated technology and easy use. Specifically designed to meet the needs of engineers, installers, facility managers and end-users, every installation or adjustment is quick and effortless. Maintenance components are logically placed and easily accessible whilst retaining their anti-vandalism features.

- Components mounted above washbasin units simplify installation.
- The 6V lithium battery can be replaced in a few simple steps.
- Modular design offers various implementations to suit diverse applications.
- 'Plug-and-play' concept makes concealed wall-mounted fitting fast and straightforward.



Designed for hands-free adjustment



Remote control technology puts you in charge

The new HyTronic remote control, 'Service-Handy', gives you full control over the customisation of your taps, eliminating the risk of component damage caused by manual adjustment. Now you can switch modes, monitor battery level and even troubleshoot at the touch of a button.

- Remote adjustment
 - Choose between six operating modes and adjust the sensor range for optimal performance.
- Interval flush programme
 - Automatically activates the tap after a pre-determined amount of inactive time has elapsed to avoid stagnation in the pipes.
- Energy saver mode
 - Helps extend battery life by up to 20% by reducing detection frequency following long periods of inactivity.

Purpose-designed for reliable performance

HyTronic has been designed, developed, manufactured and tested with a purpose – to become the most reliable electronic tap on the market.

With four different models to choose from, HyTronic is at home in any environment. Moulded in high-quality brass, the construction has a refined finish to match its unrivalled durability.

Tap models:

- HyTronic85 – classic washbasin-mounted tap in rounded design
- HyTronic86 – modern washbasin-mounted tap in angular design
- HyTronic87 – wall-mounted tap with short outlet (150 mm)
- HyTronic88 – wall-mounted tap with long outlet (200 mm)



HyTronic

Electronic taps



HyTronic85	Article no.
External mixer – mains-operated	116.125.21.1
Internal mixer – mains-operated	116.115.21.1
External mixer – battery-operated	116.225.21.1
Internal mixer – battery-operated	116.215.21.1



HyTronic86	Article no.
External mixer – mains-operated	116.126.21.1
Internal mixer – mains-operated	116.116.21.1
External mixer – battery-operated	116.226.21.1
Internal mixer – battery-operated	116.216.21.1



HyTronic87	Article no.
External mixer – mains-operated	116.127.21.1
Internal mixer – mains-operated	116.117.21.1



HyTronic88	Article no.
External mixer – mains-operated	116.128.21.1
Internal mixer – mains-operated	116.118.21.1

Accessories	Article no.
HyTronic 'Service-Handy' remote control	115.860.00.1
Concealed base unit (power supply unit for 1 – 8 taps)	241.631.00.1
Rough-in kit for transformer	616.030.00.1

Specifications

- Electronic washbasin or wall-mounted taps with dual beam infrared sensor
- High-gloss chromium-plated finish
- 6V lithium CRP2 battery or 12V AC transformer required
- External or internal mixer
- Integrated system with concealed components
- 6.0 l/min vandal resistant tap aerator included
- Various operation programmes and user-specific settings possible
- Wall-mounted taps fit concealed base unit for GIS, Duofix or solid-wall installations. Compatible with MeplaFix or 1/2" piping system

Conformity

- EN 50930-6 (Corrosion)
- EN 248 (Chromium plating)
- ISO 3822, class I (Acoustics)
- EN 60335 – 1 (Safety)
- EN 61000 – 6 – 1 (Electromagnetic)
- EN 61000 – 6 – 3 (Compatibility EMC)

Geberit International Sales AG
CH-8640 Rapperswil
Switzerland

sales@geberit.com
www.international.geberit.com